



## Rabbit anti LRP6 (phospho) Polyclonal Antibody

Alternative Name(s): Low density lipoprotein receptor-related protein 6

### Order Information

- **Description:** LRP6 (phospho)
- **Catalogue:** 601-060
- **Lot:** See label
- **Size:** 100ug/200ul
- **Host:** Rabbit
- **Clone:** nan
- **Application:** IHC(P), WB
- **Reactivity:** Hu/Rt/Ms

### **ANTIGEN PREPARATION**

A synthetic peptide corresponding to the epitope KGTYF at a phosphorylation threonine1479 in LRP6 protein

### **BACKGROUND**

Low-density lipoprotein receptor (LDLR)-related protein 6 (LRP6) is a member of the LDLR family which consists of cell surface proteins involved in receptor-mediated endocytosis of specific ligands. LRP5 causes several human diseases including bone mineral density variability<sup>1</sup>, endosteal hyperostosis, autosomal dominant osteopetrosis type I etc. The V171 mutation in LRP5 causes high bone density by impairing the action of a normal antagonist of the Wnt pathway and thus increasing Wnt signaling. The activity of LRP5 and LRP6 can be inhibited by binding of some members of Dickkopf (DKK) family proteins. Upon stimulation with Wnt, LRP5 and LRP6 are phosphorylated at multiple sites including Thr 1479, Ser 1490 and Thr 1492 by kinases such as GSK-3 and CK1.

### **PURIFICATION**

The Rabbit IgG is purified by site-modified Epitope Affinity Purification.

### **FORMULATION**

This affinity purified antibody is supplied in sterile Phosphatebuffered saline (pH7.2) containing antibody stabilizer

### **SPECIFICITY**

This antibody recognizes ~180 kDa of human LRP6 protein. It also reacts with mouse and rat. The other species are not tested.

### **STORAGE**

The antibodies are stable for 24 months from date of receipt when stored at -20oC to -70oC. The antibodies can be stored at 2oC-8oC for three month without detectable loss of activity. Avoid repeated freezing-thawing cycles.

### **APPLICATIONS/SUGGESTED WORKING DILUTIONS\***

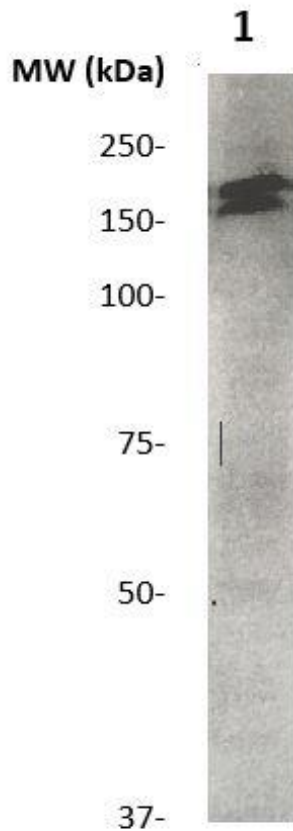
- Western Blot: 0.1-1 µg/ml
- ELISA: 0.01-0.1 µg/ml
- Immunoprecipitation: 2-5 µg/ml
- IHC: 2-10 µg/ml
- Flow cytometry: Not tested
- Molecular Weight: 180.0
- Positive Control: Kidney Tissue
- Cellular Location: Cell Membrane

\*Optimal dilutions should be determined by researchers for the specific applications.

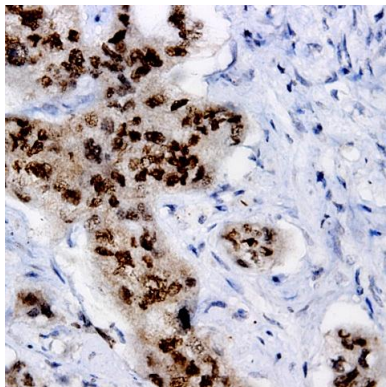
### **FOR RESEARCH USE ONLY.**

AbboMax, Inc 2528 Qume Drive, Suite 8, San Jose, California 95131, USA  
1 408-573-1898 (Tel). 1 408-573-1858 (Fax). [www.abbomax.com](http://www.abbomax.com) [info@abbomax.com](mailto:info@abbomax.com)

**DATA ATTACHMENTS**



Western Blot: The cell lysate derived from conditioned 3T3 was immunoprobed by Rabbit anti-LRP6(pT1479) (Cat#601-060) at 1:500. An immunoreactive band is observed around ~180kDa.



Immunohistochemistry: Human Breast carcinoma (FFPE) stained with Rabbit anti-LRP6 (pT1479) (Cat# 601-060) at 1:200 for 10 min @ RT. Staining of formalin-fixed tissue requires boiling tissue sections in 10 mM Citrate Buffer, pH 6.0 for 10 min followed by cooling at RT for 20 min.

**REFERENCES**

**FOR RESEARCH USE ONLY.**